

"May your walls know joy;
May every room hold laughter
and every window open to great possibility"

- Mary Anne Radmacher - Hershey

CAPTIV FENISTRATION

#SF.No.207/1B & 1C, Selakaraichal Road, Appanaickenpatti,
Sulur, Coimbatore- 641 402, Tamil Nadu, India.
Tel: +914255-265507 / Fax: +914255-265505

www.prominace.com



Aesthetic Outlook.
Robust Soul.



Weather+
window series



PROMINANCE
UPVC WINDOW SYSTEMS

The window
to a whole
new world



Inventa Sliding Window

See the world with
new eyes

Architectural aesthetics evolve with time. Taste and design pervade every aspect of a building right from the facade to the interiors. The contemporary approach has been to seek a fine balance between form and function.

An approach that we approve of, through our select line of uPVC windows & doors.

Welcome to Prominence

"Let there be many windows to your soul, that all the glory of the world may beautify it" - Ella Wheeler Wilcox.

Ushering in a new era in construction and fast becoming the preferred choice in building materials are UPVC windows and doors. Overcoming the obvious disadvantages of its previous counterparts, UPVC is here to stay...Aesthetic, Builders' choice, Cost-effective, Durable, Energy efficient, so on and so forth - it comes with a multitude of advantages. What's more, with its 'fit and fix' nature, you no longer have to deal with carpentry hassles!

Discover the world of UPVC windows & doors.
Discover Prominence...

Vision Statement

Our Vision is to Provide Best Window system by adhering to Top notch Quality, Constant Innovative developments and Provide Enhanced support system that adds Value to our business associates.

Quality Policy

Prominence is committed to deliver customer delight product and solutions, strives to achieve manufacturing excellence with compliance of international quality standards through visionary leadership and total organisation's commitment and involvement.



Built for Prominance

Cutting edge manufacturing processes on par with the world’s finest.

Strenuous Indian conditions demand that UPVC installations are robust enough. Prominance window systems are aimed to accomplish that through state of the art manufacturing processes overseen by top-tier talent and ensuring best practices.

Quality raw materials for world class products

In line with our quality policy, only the best inputs can give us the best outputs, thus quality construction begins with quality choice of materials. The finest grades of additives arrive from across the world which are widely considered as World’s Best Grade for uPVC profiles.

Testing for strength and longevity

Quality control processes and tests

Research and testing that adheres to international standards is one of our key features. A fact that enables us to consistently maintaining the set benchmarks. Internal quality compliances have been met as per EN 12608 Standards.

Following aspects were closely checked to ensure fine quality

- Dimensional Accuracy (Face flatness, squareness, angle & radius)
- Colour
- Determination of the Appearance
- Determination of Profile Mass
- Straightness
- Heat Reversion (EN 479)
- Heat Ageing (Behavior after heating) (EN 478)
- Resistance to Impact by falling mass (EN 477)

Accreditation from renowned organizations from Europe, for Accelerated Weatherability Test (Artificial weathering up to 8000 hours) and Mechanical properties & Chemical composition of our formulation.



Properties as per European and Indian Standrads (EN 12608-1:2016)	Range	Result	Accreditations from
Charpy impact strength (BS EN ISO 179 - 2 : 1999)	Not less than 20 KJ/m²	74.5 KJ/m²	SKZ - Germany/BSI - UK
Vicat Softening Temperature (BS EN ISO 306 : 1997)	Not less than 75 °C	80 °C	SKZ - Germany/BSI - UK
Flexural Modulus of Elasticity (BS EN ISO 178 : 2003)	Not less than 2200 Mpa	3070 Mpa	SKZ - Germany/BSI - UK
Tensile Impact stength (BS EN ISO 8256: 1997)	Not less than 600 KJ/m²	934 KJ/m²	SKZ - Germany/BSI - UK
Weld Strength (BS EN 514 : 2000) - Individual Specimen	Not less than 20 Mpa	25.32 Mpa	BSI - UK
Accelerated Weathering (DIN EN 12608-1:2016-08)-On going	Δ E not more than 5	2	SKZ - Germany/BSI - UK
Heat Reversion, Resistance to Impact, Behaviour after 150 °C,	To comply as per EN 12608 - 1 : 2016	Pass	BSI - UK
RoHS (Directive 2011/65/EU)	Lead should not be detected	Not detected	SGS
Flammability (UI94)		V0	CIPET
Thermal Conductivity (ASTM E - 1530)		0.137 W/mk	CIPET
Density (ASTM D 792)	Not to Exceed 1.5 g/cc	1.46 g/cc	CIPET



FEATURES

The finest in
form &
functionality

AESTHETICS

Our UPVC windows & doors can be painted and customers can choose any colour from a wide-ranging palette. But if the preference is White, no painting is needed since the mother colour of the material is White. The products can also be laminated in various textures, including authentic wood-like finishes.

EPDM WEATHER -
BLACK BEADING

Made of ethylene propylene dienemer, the weather seals ensure tight sealing and enhance air tight packing. Equipped with good weathering properties and resistance, they arrest noise and water leakage.

GLAZING SYSTEM

Glazing systems are air tight sealants with suitable space-bar, desiccant to absorb moisture and provide primary and secondary sealants. Single, double and triple glazing options are available as per the customer's needs, for arresting noise and energy loss.

MULTI CHAMBERED

Impact strength and durability of the windows are ensured with a number of multi-chambered sections with wall thickness of 2.3 mm to 2.5mm.

FUSION WELDED JOINTS

The corners and joints in Captiv windows are fused together, unlike other types of windows where they are screwed and pasted. Hence the welded joints are more closely packed and have greater strength.

HANDLE

TOUCH LOCK

Sliding Window

WEATHER SEAL

MULTI POINT LOCKING

The locking facility at two to three points holds the windows strongly. Besides increasing security, this prevents noise, air and water leakage.

SLIDING ROLLER

The windows come equipped with slider rollers that ensure smooth manoeuvrability as well as durability.

FRICTION STAY

It is the connecting mechanism between sash & outer frame and enables opening of the window to the desired size. Non-corrosive SS 304 grade is used for smooth usage.

STEEL REINFORCEMENT - RED COLOUR

With thickness of 1.5mm, hot dip galvanized to 125 GSM and 100% corrosion free, the steel reinforcement adds to the strength and sturdiness of the windows.

DRAIN HOLES

It is presented in the shutter and the outer frame to prevent the water spilling inside by providing separate drainage chambers to drain out the water.

Casement Window

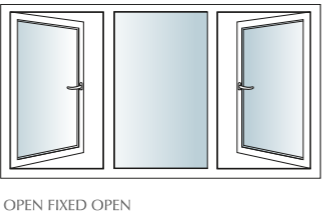
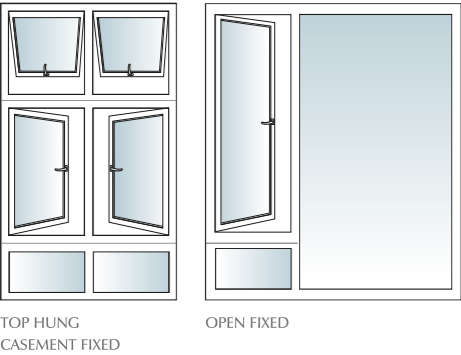
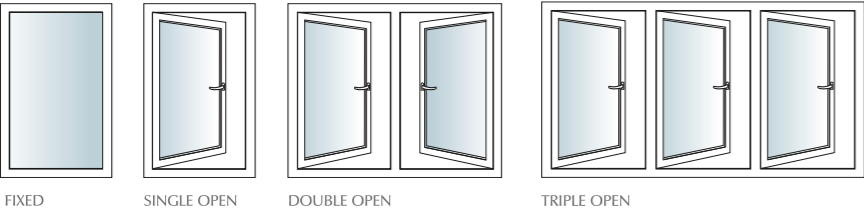


Casement Windows & Doors



Casement Windows

This system is designed for more strength and better performance with twin gasket sealing. The gasket sealing coupled with multi point lock ensures tight closure with no gaps for proper sealing, thermal and acoustic performance. Thicker Mullion profiles with reinforcements ensures sturdiness against heavy wind load. Our mullions & transoms with external strengthening bars ensures that we can design large size windows with required wind load



AND MANY MORE OPTIONS AVAILABLE.

Inventa Series
for large opening windows.



Optima Series
for smaller opening windows.



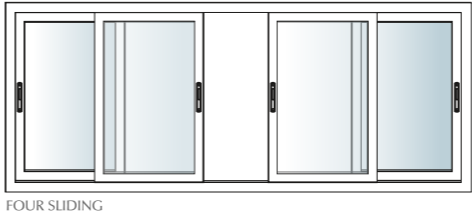
Inventa Casement Door



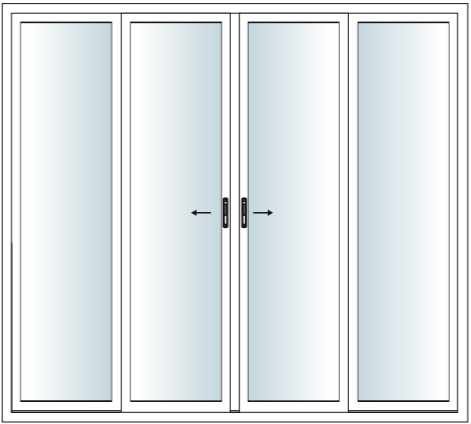
Sliding Windows & Doors

Sliding Windows & Doors

Sliding Windows work with the 'ride over' mechanism. Made up of two (or more) shutters that slide to the left and right horizontally on tracks, the windows can be made wider and taller with the addition of shutters. Sliding windows comes with an option of bug screen in a separate track.



AND MANY MORE OPTIONS AVAILABLE.



Inventa Sliding
for opening windows.



Optima Sliding
with Bug mesh



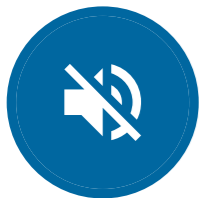
Sliding Door



Look out for a World of benefits...



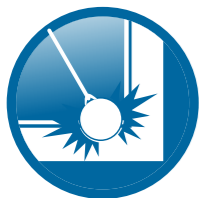
DURABILITY
Prominace window systems do not warp, twist or split. Impact modifiers in our profiles are treated with special additives, thereby making the material extremely long lasting.



SOUND INSULATION
Not only do they provide thermal insulation but also special sound insulation. Double glass units can help in sound reduction upto 30 Db.



IAQ
Indoor Air Quality (IAQ) can be maintained by avoiding interior energy loss (generally 37% through windows). Prominace windows reduce energy loss by over 30% thereby reducing energy costs.



IMPACT RESISTANCE
Prominace window systems are uniquely designed and specially formulated to withstand high impacts during handling and installation.



AESTHETICS
Looks matter the most. With this understanding, Prominace windows are adaptable to develop attractive designs, ranges and wooden finish laminated profiles.



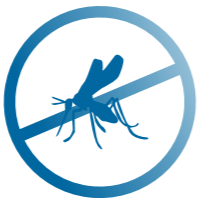
UV RESISTANCE
Prominace windows offer 100% UV resistance with right amount of TiO2, which helps in retaining whiteness against exposure to sun.



TERMITE & CORROSION RESISTANCE
Prominace window systems are termite and corrosion resistant. Salts, acids, alkali and waste gases cannot corrode the window systems.



MAINTENANCE FREE
Prominace window systems are virtually dirt resistant and easy to maintain with normal soap water.



BUG MESH OPTIONS
Mosquitoes and other bugs are a big menace. To Protect against Insects, We have bug mesh option available for our sliding systems.



FIRE RETARDANT
Prominace window systems are fire retardant. During fire, once source of fire is removed, a carbonaceous layer is formed preventing supplying of oxygen and stops the spread.

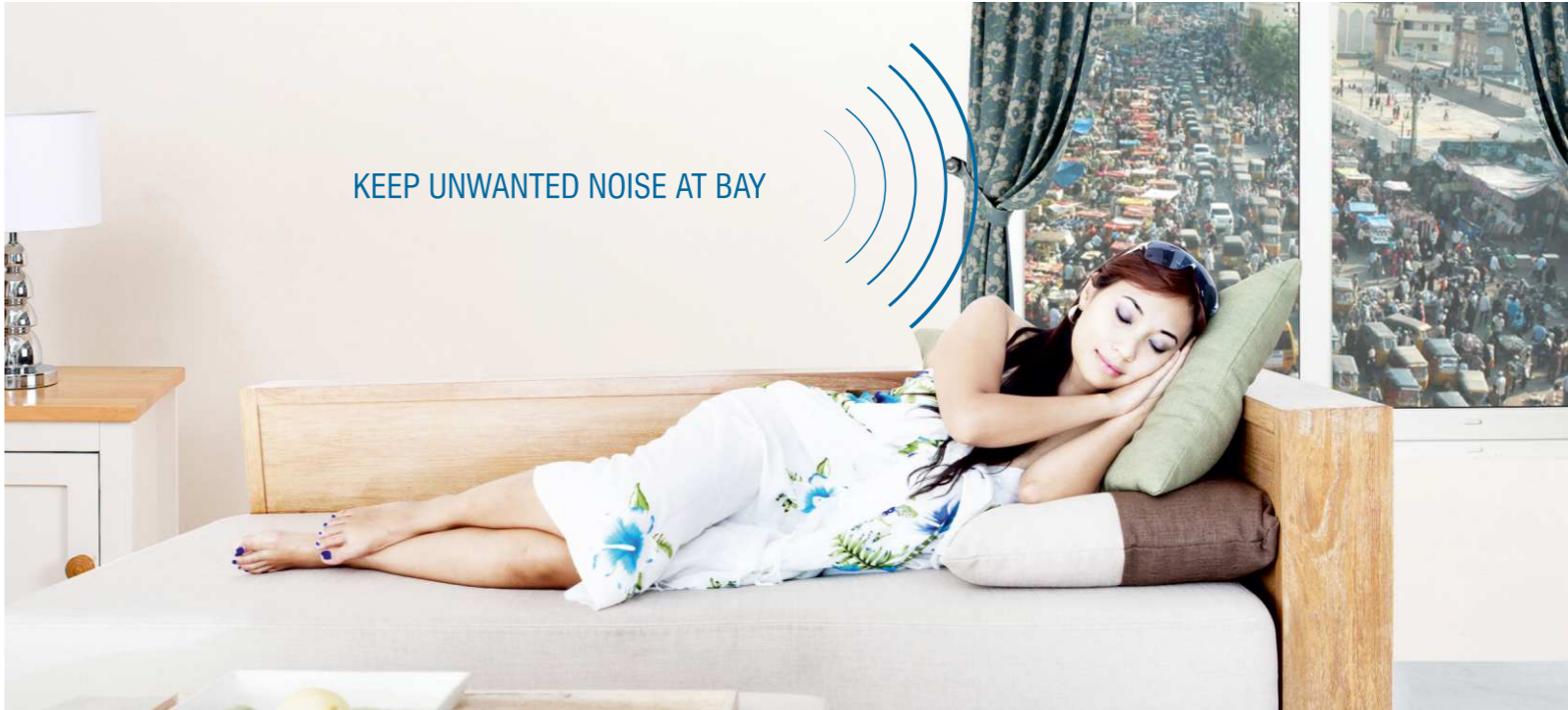


EXCELLENT COST BENEFIT RATIO
uPVC profiles save a lot of costs in terms of maintenance & saving energy when compared to Timber frames which are approximately 40% - 50% more expensive.



DESIGN FREEDOM
A creative assortment of profiles mixed with combinations like bays, coupled windows, combination windows, etc is our forte.

Sound Reducing Windows

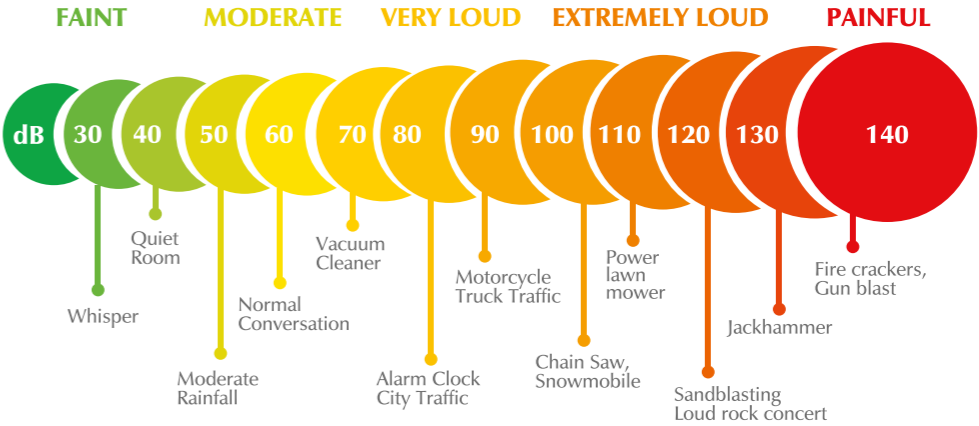


Effective Sound Insulation

Keep unwanted noise at bay with our prominace window systems. Specially designed to reduce the amount of sound entering or escaping from your home, they also add an additional layer of security. These windows are ideal for the preset busy lifestyle - or simply if you want to enjoy a quiet life!

Prominace windows are engineered to reduce sound transmission. The Multi chambered profiles, fusion Welded joints, Multipoint locking mechanism, and dual compression gaskets ensure that there is no sound infiltration. When combined with recommended Glazing & Hardwares, Prominace window system can insulate your indoors from unwanted sounds upto 40 db.

Recommended interior noise levels	
Environment	dB
Library	30-40
Bedroom	30-40
Classroom	35-40
Living room	40-45
Private office	40-45
Open office	45-50



Decibel Comparison Chart

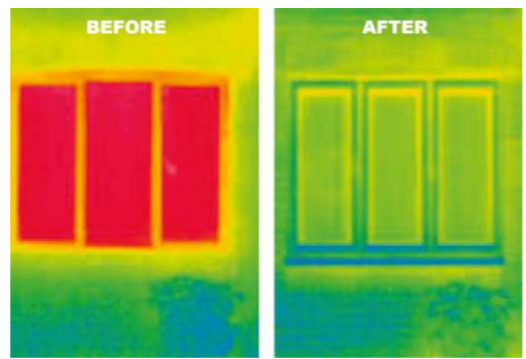
GO GREEN, SAVE MORE...



Energy Saving

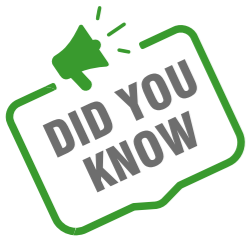
Windows typically occupy about 15 to 20 percent of the surface area of the walls. Windows not only add aesthetic looks and often a very important aspect of a home, but also a very significant component of home heating and cooling costs. Poor windows lose more heat per square foot of area in winter and gain more heat in summer than any other surface in the home.

Today, prominence have changed the energy performance of windows in a radical way. Prominence energy efficient window systems will make your home more comfortable, dramatically reduce your energy costs and help to create a brighter, cleaner, healthier environment by reducing your carbon footprint.



Thermal image of house window showing large heat loss as indicated in red.

Same window fitted with new uPVC window showing no heat loss in green.



That poorly insulated windows and skylights can cause a loss of up to **30%** of your home's cooling cost during the summer?

Wind load

Strength against the storming winds

India is divided into 6 zones based on the wind speed data maintained at various weather stations across the country. The wind speed data is available for the 3 second short durations and long duration as well which is collected over last 50 years. Normally this short duration wind speed is called as basic wind speed and have a probability of once in 50 years.

Some of the factors that determine wind load are:

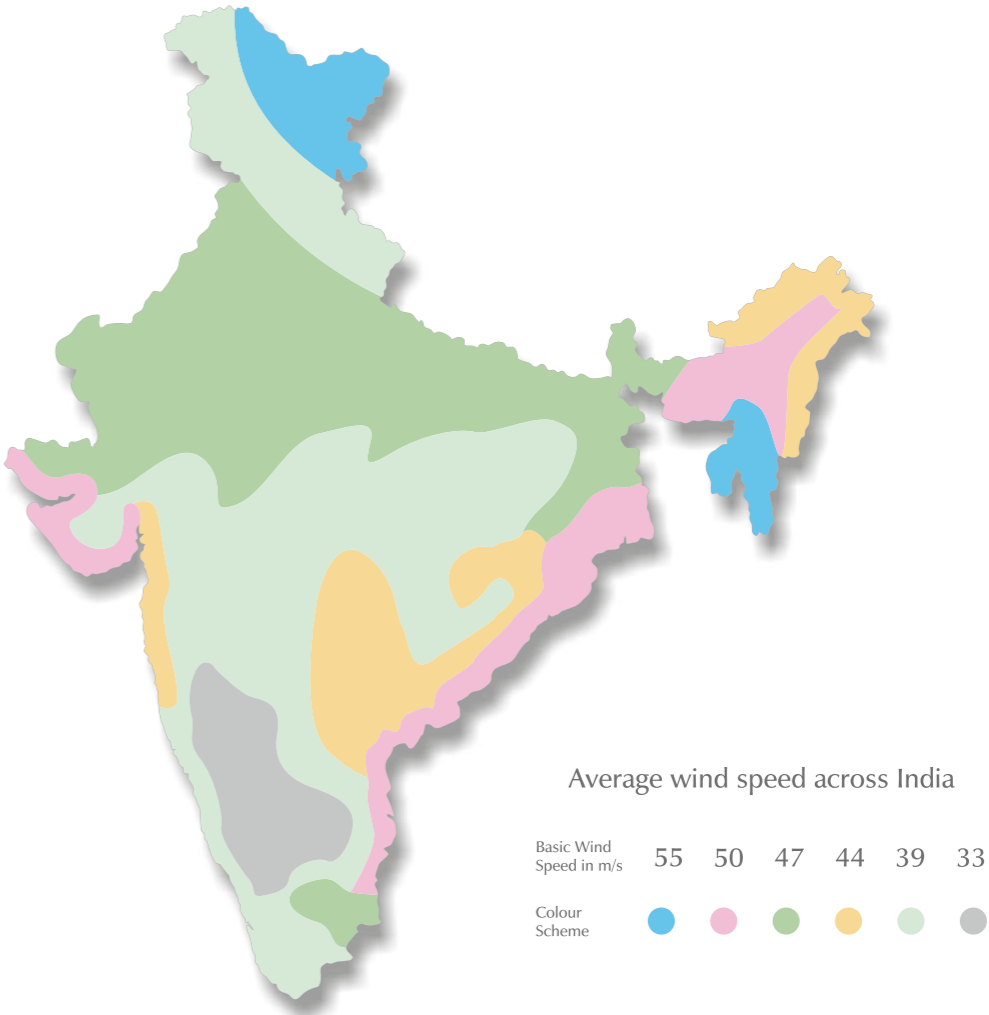
- a. Basic wind speed as per the geographic location.
- b. Height of the structures.
- c. Geometric shape of the building.
- d. Slope of the ground near structure.
- e. Life of glazing / structure desired.

Keeping these factors in mind we design and develop the profile to offer maximum stability and durability.

Below is a list of Main Indian cities along with tentative different wind loads at different heights. These are assumed at middle of city.

	Upto 5 th floor	5 th to 10 th floor	10 th to 15 th floor	15 th to 30 th floor
Delhi	1559 Pa	1862 Pa	2078 Pa	2386 Pa
Mumbai	1366 Pa	1631 Pa	1821 Pa	2091 Pa
Kolkatta	1764 Pa	2107 Pa	2352 Pa	2700 Pa
Bangalore	768 Pa	918 Pa	1025 Pa	1176 Pa
Chennai	1764 Pa	2107 Pa	2352 Pa	2700 Pa

All these wind load units are accommodated with Prominence Optima and Inventa System

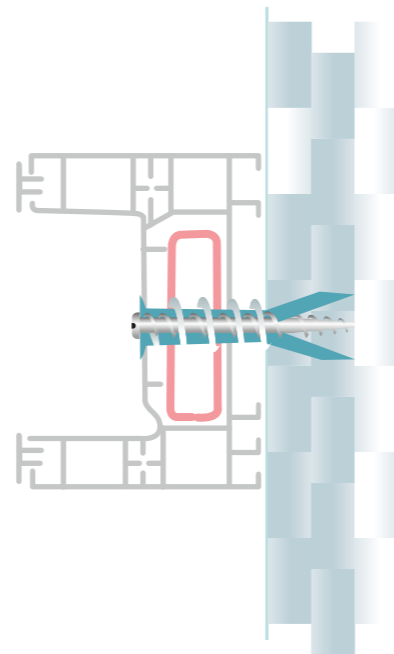




Efficiency that Exceeds your expectations...

The process of installation starts from the site survey during plastering work of the building. Measurements are taken in height, width and diagonal with the advice of the site engineers.

The sizes and designs of windows with the appropriate placements are confirmed with the engineer. The installation windows are positioned exactly with the tube level and plumb level. They are perfectly screwed with hanger fastener screws using hammering machines so that the windows hold on strongly to the walls. They are then sealed properly with silicon sealant that ensures tight packing, without any clearance.



Usage of Anchor Fastener

Our relationship with our customers doesn't stop with the sales & installation process; in fact, it is then that it begins. We understand the paramount importance of after-sales service and the impact it has on building a long-term customer rapport. Hence to deliver timely and prompt services, we have an experienced and efficient service team for post- sales services.

